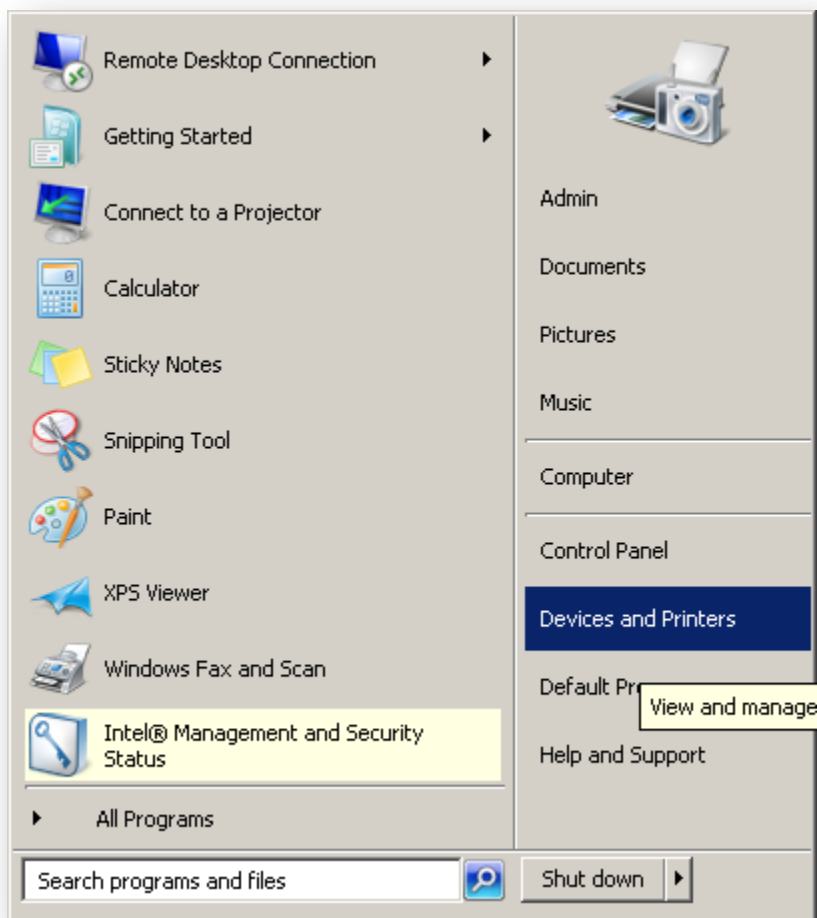


How To Setup A Network Printer Toyota & Henry Curtis Ford Windows 7

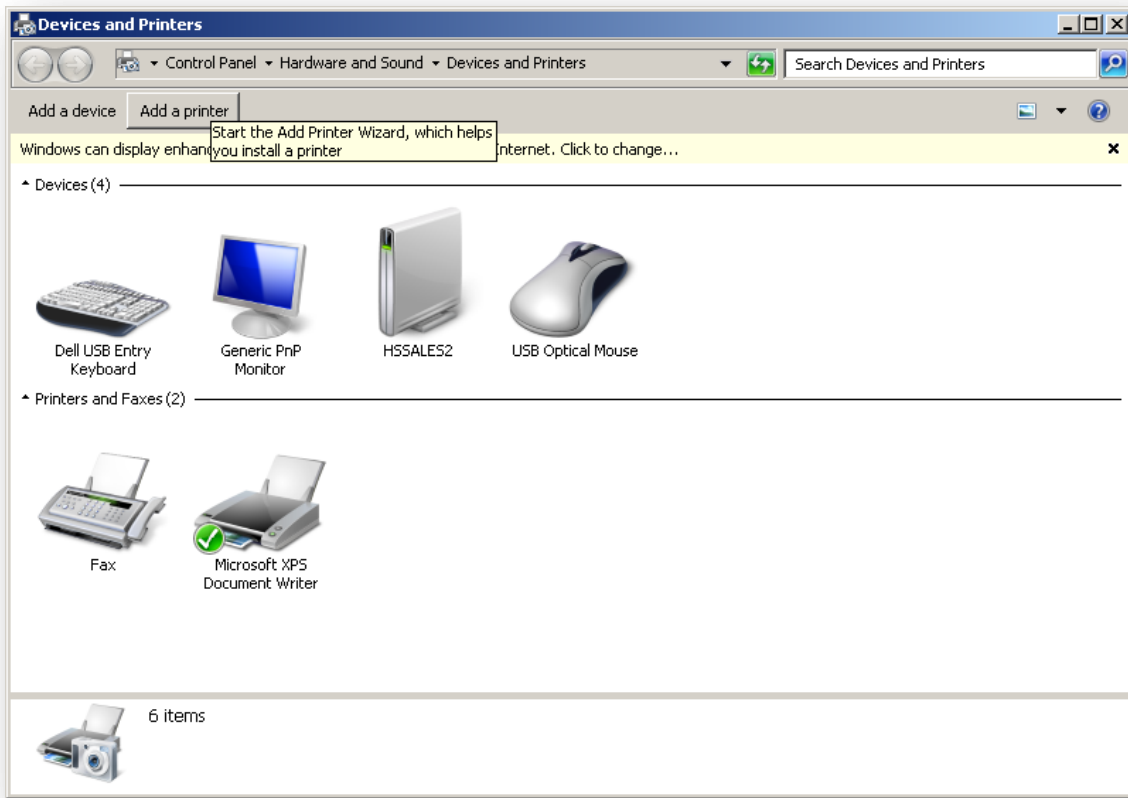
To setup a network printer, do the following:

Click on **Start** then **Devices and Printers**



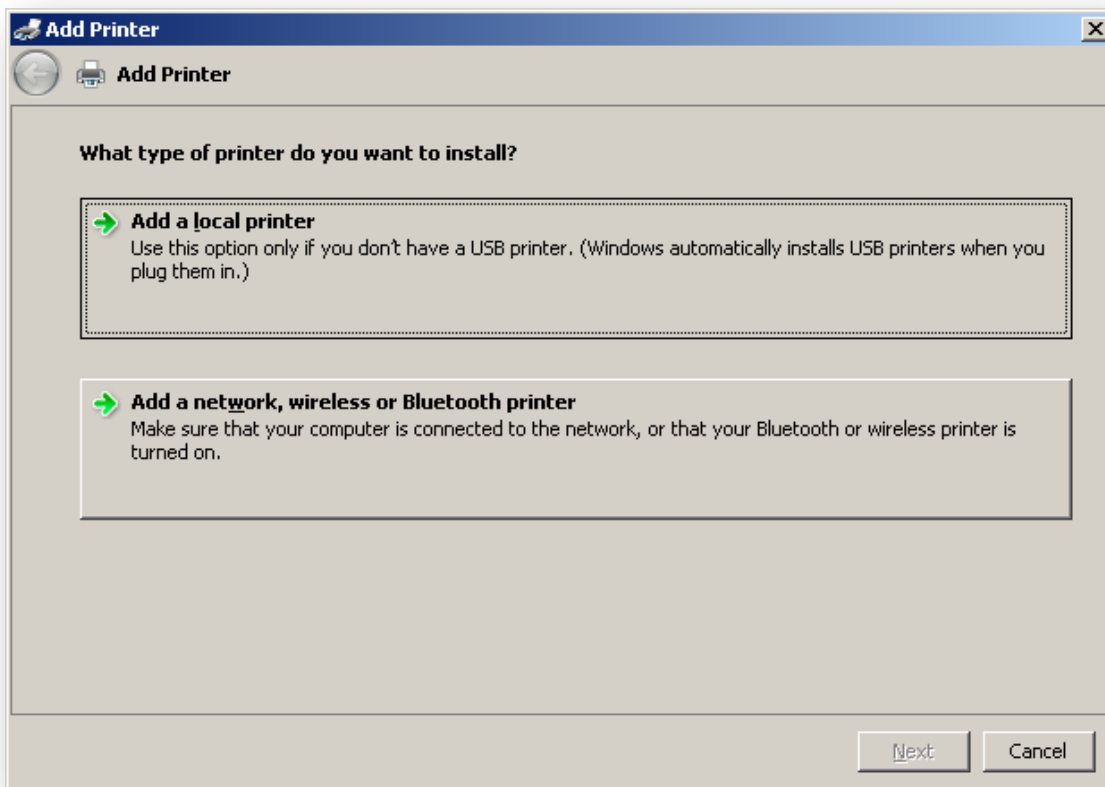
Next

Click **Add Printer** in the Devices and Printers Window



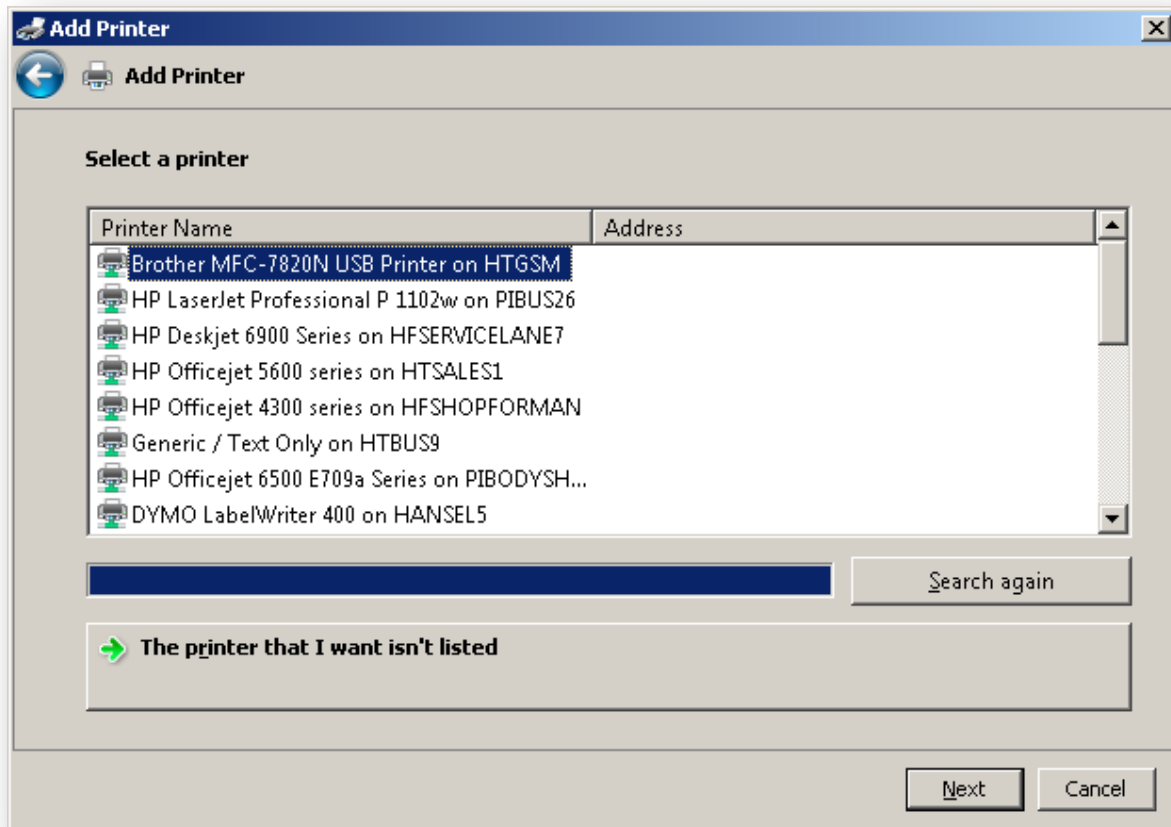
Next

Click **Add a network, wireless or Bluetooth printer** in the Add Printer Window



After clicking Add a network, wireless or Bluetooth printer a list of printer will appear.

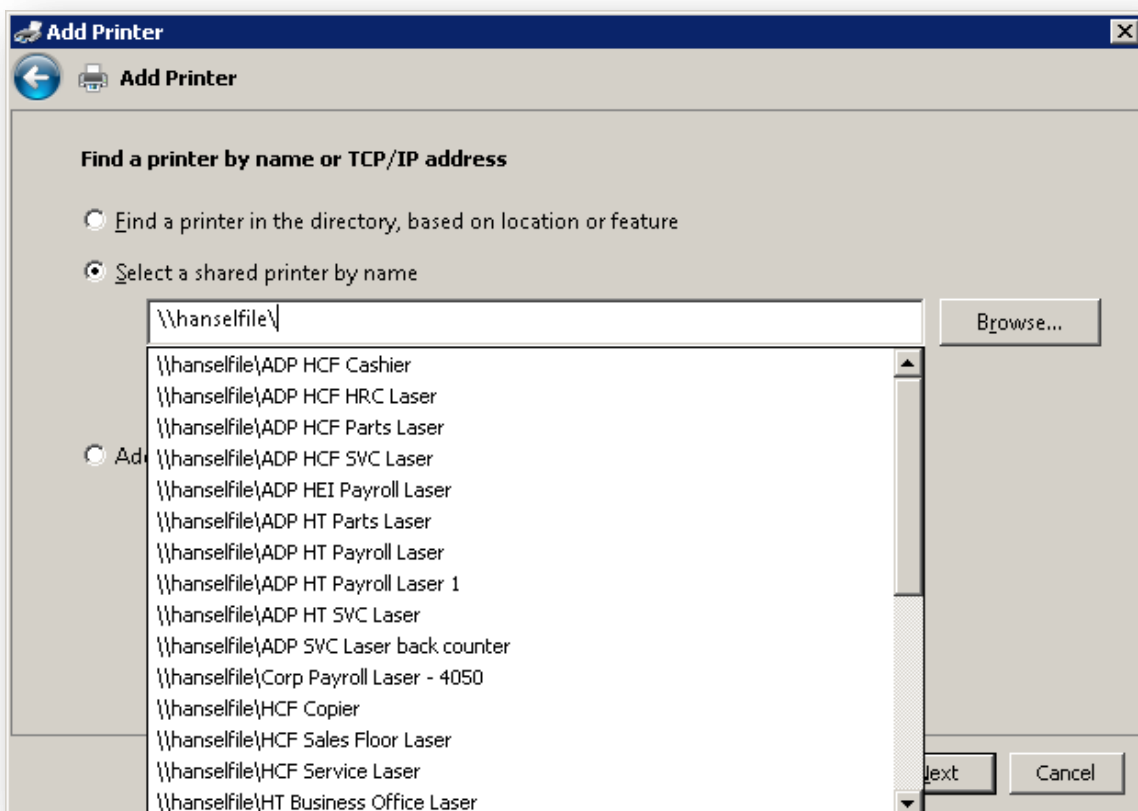
Click on **The printer that I want isn't listed** button.



The window below will appear.

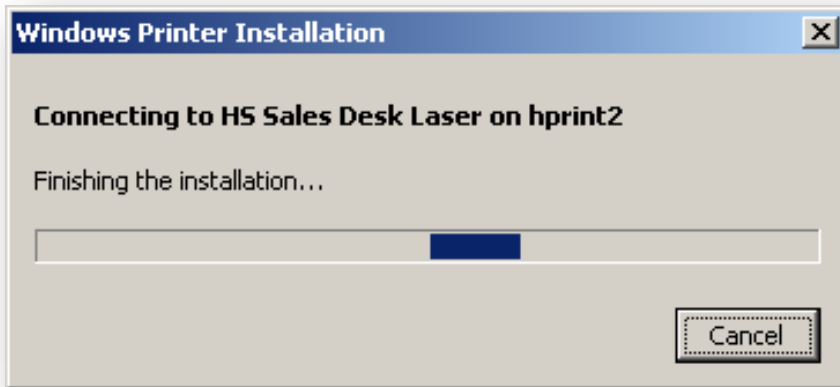
click " **Select a shared printer by name** " Next type in the following:

\\hanselfile



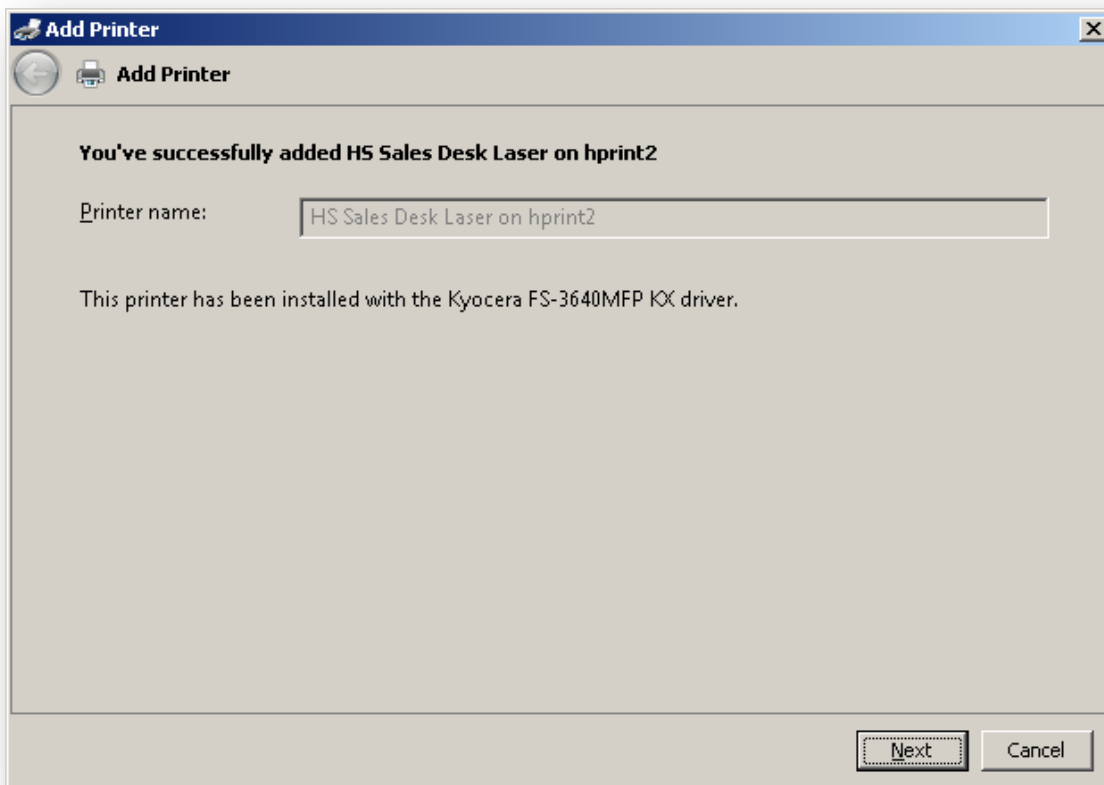
After typing in the print server name in box above a list of printers should appear.

Select the printer that is in your department or that you want to print to. The Windows Printer Installation box will appear as windows is setting up the printer you selected.



After the printer has been installed you should see the screen below that installation was successful.

Click on **Next**



Then click on **Finish** and you have setup your printer.

